



Whilst every effort is made to give a fair description, the accuracy of these particulars is not guaranteed, neither do they constitute an offer or contract.

MATHESONS ESTATE AGENTS have not tested any apparatus, equipment, fitting or services and so cannot verify that they are in working order. The buyer is advised to obtain verification from their solicitor or surveyor. Measurements are correct to within +/- 6 A sonic tape is used. None of the statements contained in these particulars or any of our properties are to be relied upon as a representation of fact.

166 Manor Park Road
Harlesden
London
NW10 4JT
T: 020 8965 2250
E: sales@mathesonsestates.com
www.mathesonsestates.com



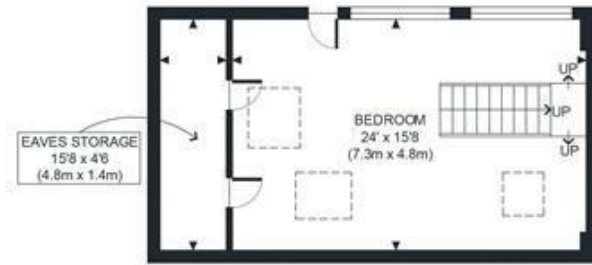
Bowes Road, London, W3 7AD Asking Price £975,000 Freehold



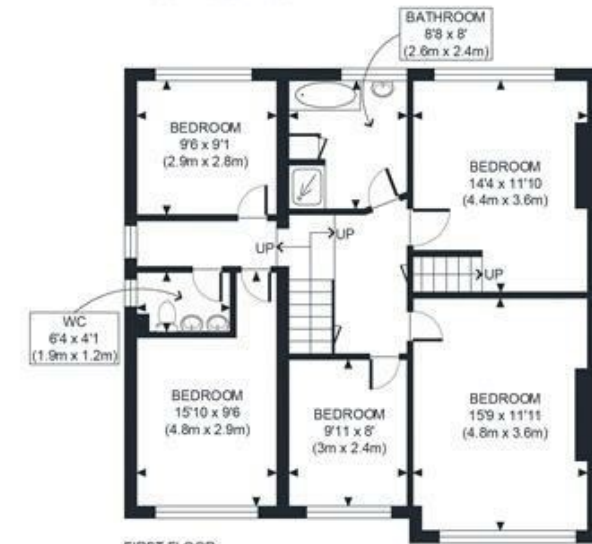
KEY FEATURES:

- SEMI DETACHED HOUSE
- DOUBLE FRONTED
- 2214SQFT/206SQM
- SIX BEDROOMS
- FOUR RECEPTION ROOMS
- LARGE GARDEN
- OFF STREET PARKING 3 CARS
- UPDATING REQUIRED
- EPC RATING E

NEW TO THE MARKET FOR THE FIRST TIME IN OVER 30 YEARS. A SEMI DETACHED DOUBLE FRONTED SIX BEDROOM, FOUR RECEPTION HOUSE WHICH IS SADLY NOW IN NEED OF MAJOR UPDATING. Offering 2214sqft/206sqm of floor space with a 58ft/17m rear garden and off street parking for at least three cars. Accommodation is arranged as follows, entrance hall, four reception rooms, kitchen and shower room on the ground floor, whilst the first floor comprises, landing, five bedrooms, bathroom and separate WC. The top floor provides a dormer loft conversion bedroom six. There is still plenty of scope to further improve and extend this property if desired. Located on the corner of Bowes Road and Foster Road within the very popular and in demand Goldsmith Estate, the property has both East Acton Central Line and Acton Central Overground Stations within easy reach. The property is available immediately and to buy with no onward chain.



SECOND FLOOR
 GROSS INTERNAL
 FLOOR AREA 453 SQ FT



FIRST FLOOR
 GROSS INTERNAL
 FLOOR AREA 901 SQ FT



FIRST FLOOR
 GROSS INTERNAL
 FLOOR AREA 860 SQ FT

APPROX. GROSS INTERNAL FLOOR AREA WITH EAVES STORAGE 2214 SQ FT / 206 SQM
 APPROX. GROSS INTERNAL FLOOR AREA WITHOUT EAVES STORAGE 2144 SQ FT / 199 SQM

Ref. Copyright photoplan
 Disclaimer: Floor plan measurements are approximate and are for illustrative purposes only.
 While we do not doubt the floor plan accuracy and completeness, you or your advisors should
 conduct a careful, independent investigation of the property in respect of monetary valuation

